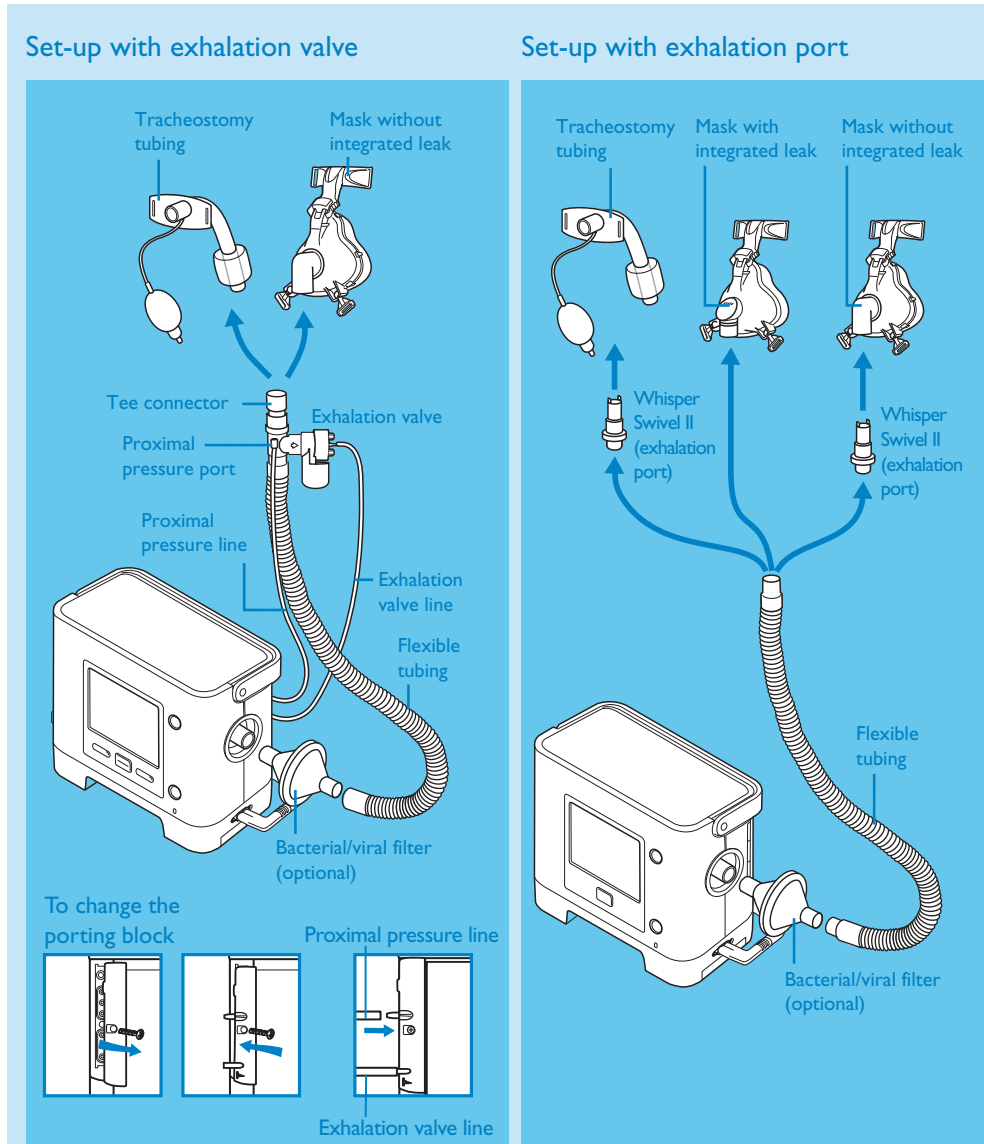


## 2 Circuit set-up

Before operating Trilogy100, you need to configure the circuit type.



**Please check that circuit type is properly configured.**

### How to reach us

Respironics  
1001 Murry Ridge Lane  
Murrysville, PA 15668

Customer Service  
724 387 4000  
800 345 6443 (toll free)

Respironics, Trilogy, Whisper Swivel, and Alice are trademarks of Respironics, Inc. and its affiliates.

© 2009 Respironics Inc. All Rights Reserved.

Respironics reserves the right to make changes in specifications and/or to discontinue any product at any time without notice or obligation and will not be liable for any consequences resulting from the use of this publication.

1062062  
JH 4/3/09

## Trilogy100

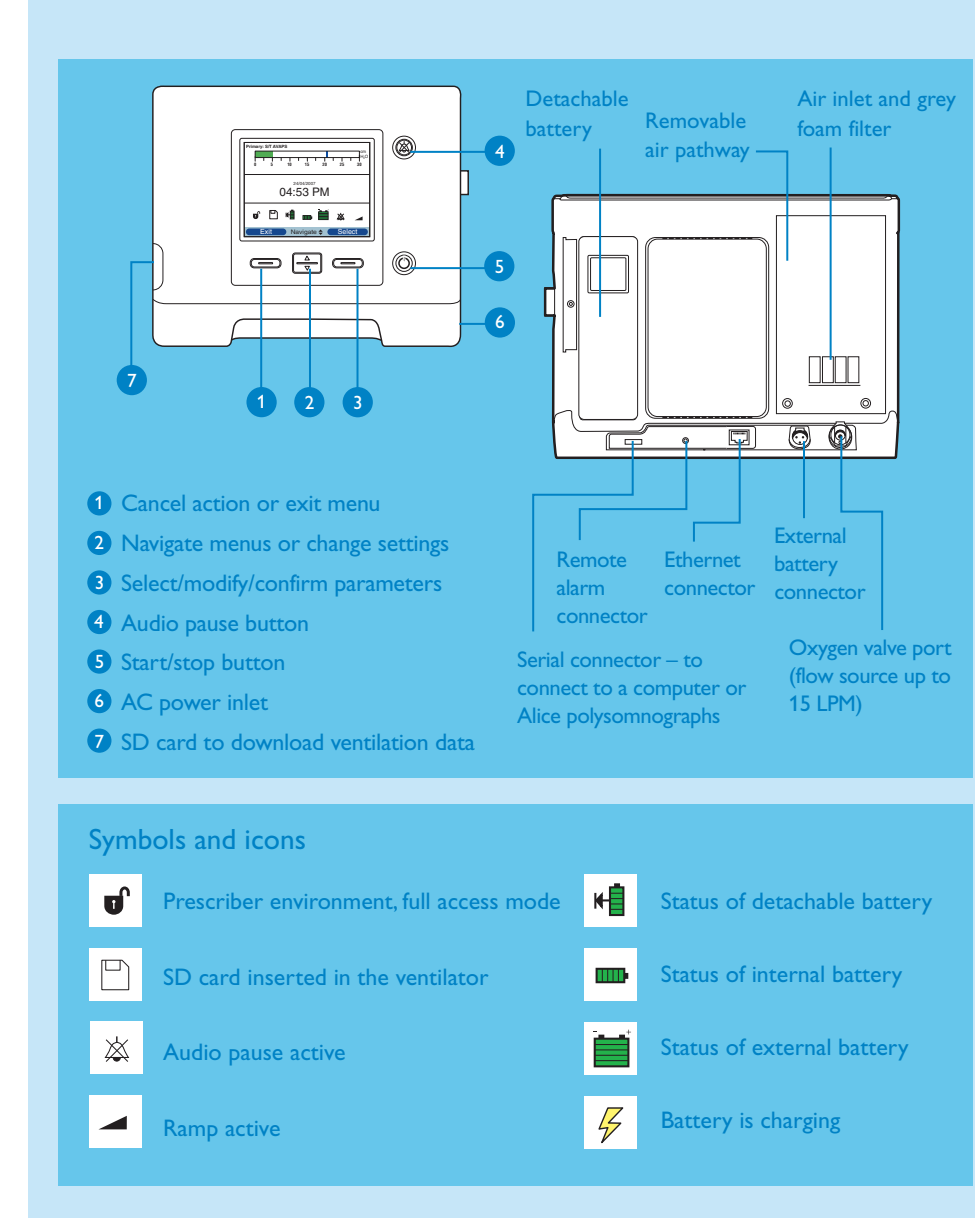


# Quick start guide

- 1 Overview
- 2 Circuit set-up
- 3 Set-up screen
- 4 Prescription set-up

RESPIRONICS

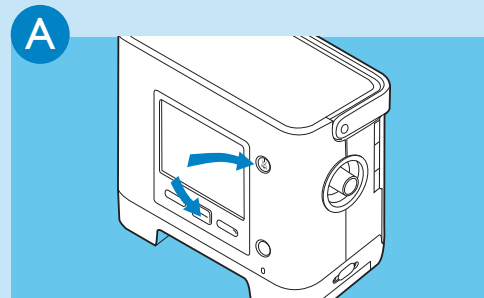
## 1 Overview



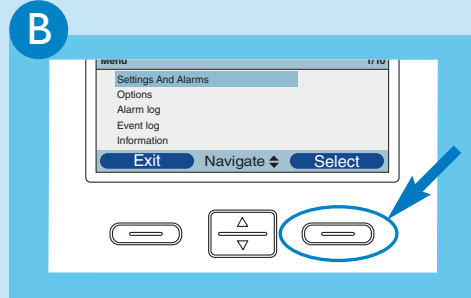
# 3 Set-up screen

Setting the Active or Passive circuit

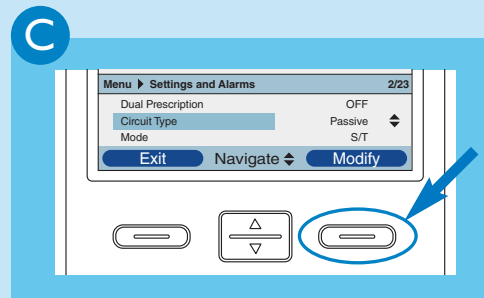
Make sure Trilogy100 is turned off before taking the following steps



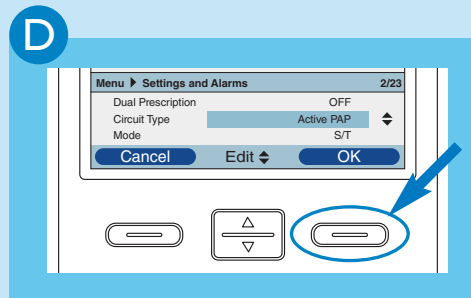
Press and hold and for a few seconds to access **Set-up** page



Select **Settings And Alarms**



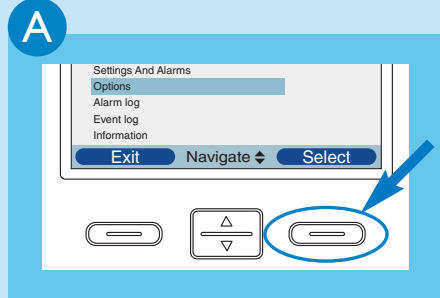
Navigate to **Circuit Type** and press **Modify**



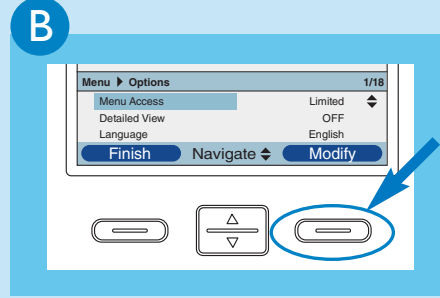
Use to choose **Active PAP** (exhalation valve set-up) or **Passive** (exhalation port set-up) and then press **OK** twice to confirm

Setting menu access

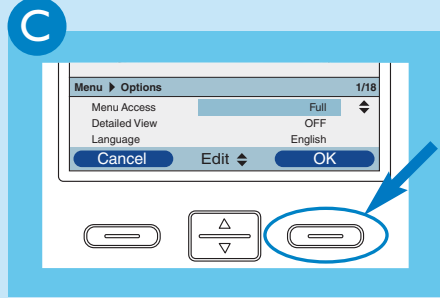
To enable full access to the settings



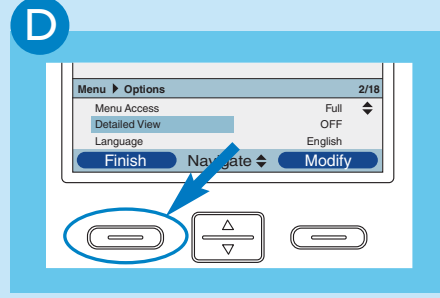
Navigate to **Options** and press **Select**



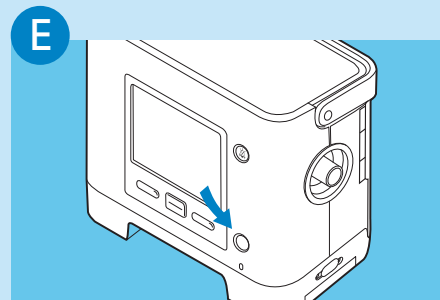
Press **Modify** to enter **Menu Access**



Use to choose **Full** or **Limited Access** and press **OK** to confirm

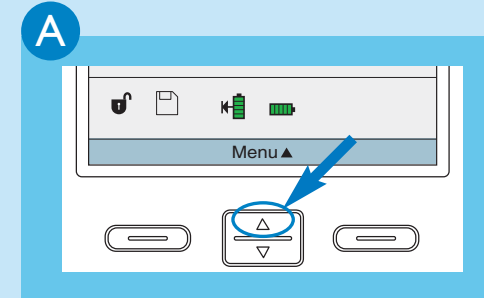


Press **Finish** and **Exit** to return to **Initial Screen**

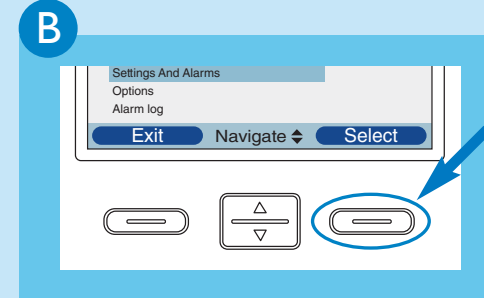


Press to begin therapy or continue navigating through the menu to set-up the ventilation parameters

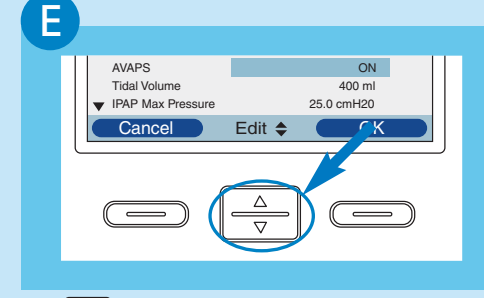
# 4 Prescription set-up



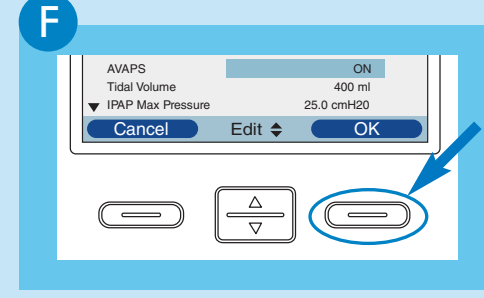
From main screen, press **Menu**



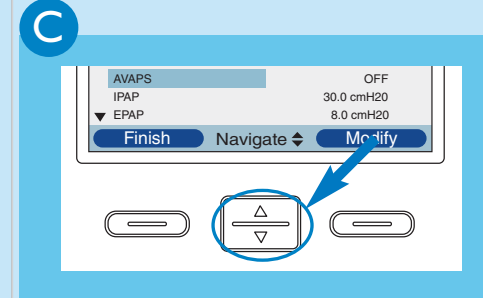
Select **Settings And Alarms**



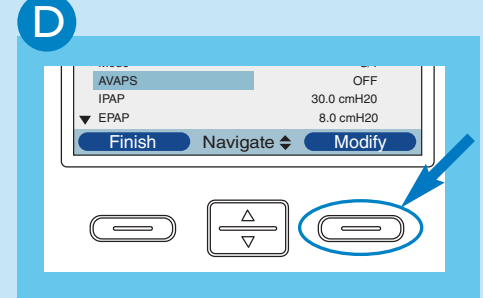
Use to change the value or status of setting



Press **OK** to validate new setting

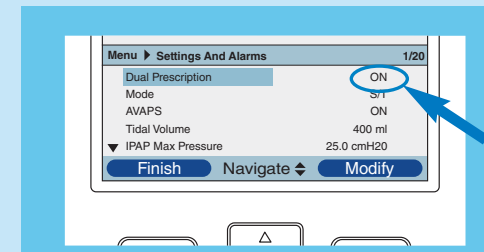


Scroll up and down using to navigate through the settings and alarms

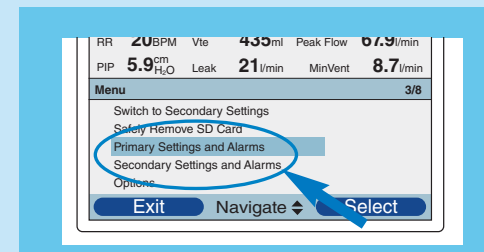


Press **Modify** to change the parameter highlighted in blue

## Dual Prescription



If **Dual Prescription** is enabled, both prescriptions need to be adjusted as previously explained



Two prescriptions to set